

**SDRME EXECUTIVE COMMITTEE MEETING**

**Whistler: July 9, 2000**

**Agenda**

**Brief Updates for Whistler Meeting (Sharon Krackov)**

- Welcome to new members
- Gifts
- Presentations by Ex-Officio Members
- Closing the meeting

**Membership: North America**

**Membership Update (Sheila Chauvin)**

- New members
- Response to mailing to solicit membership
- New application materials (1 page sheet about SDRME for application package)

Procedures to bring applicants to membership

*Membership Job Case - active  
link to website - Meeting  
inbound  
Fin...*

**Membership: Emeritus Members (David Cook)**

Emeritus Members (David Cook to request brief bio (from names in parentheses); vote on membership at Business Meeting)

- Michael Brooks, U. Alabama (Bill Weaver)
- Wayne Davis, U Michigan (Larry Gruppen)
- Chuck Dohner, U. Washington. (Fred Wolf)
- Frank Stritter, UNC (Carol Tresolini)

**Membership: Ex Officio Members (Sharon Krackov)**

Invitations sent 4/00 to the following. All accepted except those noted below.

- Brownie Anderson, AAMC—attending Whistler meeting
- Charles Boelen, WHO
- Tom Bowles, NBME (no response)
- Barbara Barzansky, AMA (no response)
- Dale Dauphinee, MCC—attending Whistler meeting
- Nancy Gary (Gerry Whelaln), ECFMG—attending Whistler meeting
- Penny Hansen (Karen Mann) CAME
- Sam Leinster, ASME—attending Whistler meeting
- Herb Traxler HRSA (no response)
- Douglas Wood, AACOM

**Membership: International Affiliate Members, (Gwendie Camp)**

Membership committee,

Chair: Gwendie Camp

Members: Rosalie Ber, John Bligh, Jill Gordon, Gordon Page

Updates on: Athol Kent, Brian Jolly, Mark Brennan, Mona Eriksson

### **Invited Guests (All)**

Those who have made extensive contributions to research, and have been somewhat involved in SDRME but not to an extent that would permit emeritus membership, be invited to come to the SDRME Summer meeting as a guest, at the expense of the Society (e.g., Reed Williams).

Invited speakers: Develop policy on bringing in outside speakers for the summer meeting and/or paying their expenses.

### **Treasury**

Treasury Report, George Nowacek  
Budget, George Nowacek  
Mission-based budgeting, John Shatzer

### **Nominations (David Cook)**

Committee: Boyd Richards, Louise Arnold, Guilia Bonaminio  
New Exec members to replace: Gwendie Camp and Jon Veloski  
Terms of Office on Exec

### **By Laws (David Cook)**

Vote on additions (Business meeting)  
Information Technology Coordinator  
Addition of regions under membership

### **Webpage/Listserv (George Nowacek)**

Update the look of the webpage

### **SDRMEania**

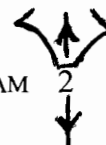
Exhibit, Gwendie Camp  
History, Mike Ravitch

### **FMER (Sharon Krackov)**

Current status update from GEA Steering Committee Meeting 6/00 (Sharon Krackov)

### **SDRME/GEA Professional Development Conference**

Discussion of future plans for:  
Survey  
New leadership  
Second-level conference.



**SDRME Invited Reviews** (Jon Veloski)

Status of Albanese (OME's: Accomplishments ad Added Value Contributions)

Update on current proposals from:

David Irby (ambulatory update)

Maurice Hitchcock, (outcomes of case-based learning)

Joel Lanphear (change)

Glenn Regehr (cognitive dimensions of social learning)

Emil Petrusa/John Shatzer (standardized patients)

Additional reviews: Mark Albanese, PBL

**Best Evidence Medical Education**, Fred Wolf

**Other Projects/Ideas** (Sharon Krackov)

Liaison with Medical Education, Teaching and Learning in Medicine

Research Notebook for young researchers

**Executive Committee Issues**

Procedures Manual, David Cook

**Future Annual Meetings**

Annual Meeting Digby Pines, NS, July 12-15,200 (Karen Mann)

Annual Meeting, Colorado 7/14-17, 2002 (Robin Harvan)

**SDRME Meetings at other Venues**

SDRME at Ottawa in Cape Town, March 2, 2000 (John Shatzer)

SDRME at AMEE, Beer-Sheva, Israel, August 27-30, 2000 (Sharon Krackov)

Monday, August 29, 2000 1:00-2:00 PM

SDRME at AAMC, Chicago, Sunday, October, 29, 2000 (Les Sandlow)

Location: Costas Restaurant

Cost: around \$40.00 per person without drinks